

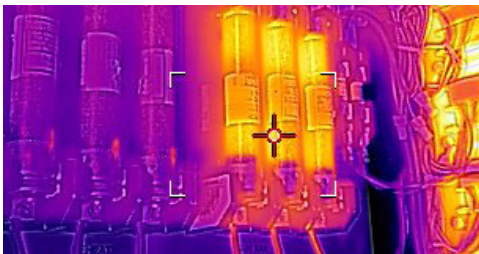


INFRARED CAMERA WITH MSX® & WI-FI

FLIR Ex-Series™

FLIR E4, E5-XT, E6-XT, and E8-XT are powerful, cost-effective, easy-to-use troubleshooting tools for building, electrical, and mechanical applications. With four resolution options—up to 320 × 240 infrared pixels—and the ability to accurately measure temperatures from -20°C to 550°C/-4°F to 1022°F (E6-XT and E8-XT), the Ex-Series has models to fit your target size, working distance, visual detail needs, and budget. All models include MSX® technology for extraordinary thermal imaging detail. Wi-Fi connectivity to smartphones and tablets via the FLIR Tools® Mobile app makes sharing images and sending reports from any location easier, enabling you to make critical decisions faster. With Ex-Series cameras, you can gain the competitive advantage by providing clients with thermal images that clearly reveal the source of electrical, mechanical, and building-related problems.

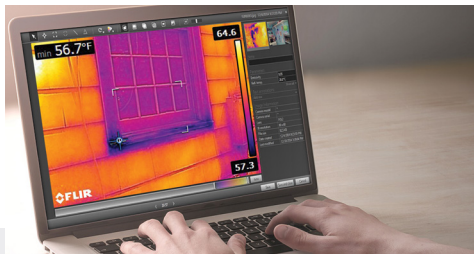
www.flir.com/Ex-Series



EASY TO USE

Intuitive graphic interface simplifies measurements in both thermal and MSX mode

- Fully automatic and focus-free
- Accurately measure your target using center spot or max/min area box
- Navigate easily to on-screen settings, image modes, and measurement tools using simple button controls
- Activate MSX to enhance IR images with visual detail for better perspective and interpretation



CONVENIENT TO SHARE IMAGES AND FINDINGS

Download images, create reports, and share what you've found instantly

- Records standard JPEGs with embedded temperature data for easy sharing with clients
- Wi-Fi connectivity to mobile devices via the FLIR Tools Mobile app
- Rapid Wi-Fi or USB image transfer for documentation
- Image analysis and editing, plus report creation, through FLIR Tools



COMPACT AND RUGGED

Built for portability and safe, efficient use in harsh environments

- Lightweight and well-balanced at just 1.2 lbs (0.575 kg)
- Withstands a 2-meter drop test
- IP54 Enclosure provides a high level of protection against dust and water
- Comes with 2-year warranty coverage on the camera and 10-year coverage for the detector

SPECIFICATIONS

Image and optical data	E4	E5-XT	E6-XT	E8-XT
IR resolution	80 × 60 (4,800 pixels)	160 × 120 (19,200 pixels)	240 × 180 (43,200 pixels)	320 × 240 (76,800 pixels)
Thermal sensitivity/NETD	<0.15°C (0.27°F) / <150 mK	<0.10°C (0.27°F) / <100 mK	<0.06°C (0.11°F) / <60 mK	<0.05°C (0.09°F) / <50 mK
Spatial resolution (IFOV)	10.3 mrad	5.2 mrad	3.4 mrad	2.6 mrad
Field of view (FOV)	45° × 34°			
F-number	1.5			
Image frequency	9 Hz			
Focus	Focus-free			
Detector data				
Detector type	Focal Plane Array (FPA), uncooled microbolometer			
Spectral range	7.5–13 μm			
Image presentation and modes				
Display	3" 320 × 240 color LCD			
Image adjustment	Automatic adjust/lock image			
Image modes	Thermal MSX, thermal, picture-in-picture, thermal blending, digital camera			
Color palettes	Iron, Rainbow, Black & White			
Measurement and analysis				
Object temperature range	-20°C to 250°C (-4°F to 482°F)	-20°C to 400°C (-4°F to 752°F) in two ranges	-20°C to 550°C (-4°F to 1022°F) in two ranges	-20°C to 550°C (-4°F to 1022°F) in two ranges
Accuracy	±2°C (±3.6°F) or ±2% of reading for ambient temperature 10°C to 35°C (50°F to 95°F) and object temperature above 0°C (32°F)			
Spotmeter	Center spot			
Area	Box with max/min			
Isotherm	Above alarm, below alarm			
Data communication and interfaces				
Interfaces	USB Micro: data transfer to and from PC and Mac device			
Wi-Fi	Peer-to-peer or infrastructure			
File format	Standard JPEG, 14-bit measurement data included			
General				
Operating temperature range	-15°C to 50°C (5°F to 122°F)			
Battery	Rechargeable 3.6 V Li ion battery			
Battery operating time	Approx. 4 hours at 25°C (77°F) ambient temperature and typical use			
Battery charging time	2.5 hours to 90% capacity in camera. 2 hours in charger			
Drop	2 m (6.6 ft.)			
Camera weight, incl. battery	0.575 kg (1.27 lb.)			
Camera size (L × W × H)	244 × 95 × 140 mm (9.6 × 3.7 × 5.5 in)			
Box contents	Infrared camera, hard transport case, battery, USB cable, power supply/charger with EU, UK, US and Australian plugs, printed documentation			

Specifications are subject to change without notice. For the most up-to-date specs, go to www.flir.com

CORPORATE HEADQUARTERS

FLIR Systems, Inc.
27700 SW Parkway Ave.
Wilsonville, OR 97070
USA
PH: +1 866.477.3687

LATIN AMERICA

FLIR Systems Brasil
Av. Antonio Bardella, 320
Sorocaba, SP 18085-852
Brasil
PH: +55 15 3238 8070

BOSTON

FLIR Systems, Inc.
9 Townsend West
Nashua, NH 03063
USA
PH: +1 866.477.3687

CANADA

FLIR Systems, Ltd.
3430 South Service Road, Suite 103
Burlington, ON L7N 3T9
Canada
PH: +1 800.613.0507

www.flir.com
NASDAQ: FLIR

Equipment described herein is subject to US export regulations and may require a license prior to export. Diversion contrary to US law is prohibited. Imagery for illustration purposes only. Specifications are subject to change without notice. ©2019 FLIR Systems, Inc. All rights reserved. 03/19

18-2963-INS



The World's Sixth Sense®

Diensten van EURO-INDEX

EURO-INDEX is fabrikant, importeur en distributeur van diverse A-merken op het gebied van test- en meetinstrumenten. Daarnaast leveren wij een groot aantal diensten om het gebruik van deze instrumenten in uw bedrijfsvoering te optimaliseren. Dit omvat uiteraard onderhoud, reparatie en kalibratie van de instrumenten, maar ook kennisdeling via EURO-INDEX Academy en verhuur van instrumenten.

Geautoriseerd Service Centrum

EURO-INDEX b.v. is van alle vertegenwoordigde merken een Geautoriseerd Service Centrum. Dit betekent dat uw instrumenten worden behandeld door technici die zijn opgeleid door de fabrikant en beschikken over de juiste gereedschappen en software. Er worden uitsluitend originele onderdelen toegepast en de garantie van uw instrument, evenals de certificering (ATEX, EN50379, etc.) blijven intact.

Kalibratielaboratorium

Het laboratorium in Nederland beschikt over een RvA accreditatie naar EN-ISO/IEC 17025. Deze accreditatie geldt voor grootheden, zoals gespecificeerd in de scope bij accreditatienummer K105. RvA kalibratiecertificaten zijn internationaal geaccepteerd en is gelijkwaardig aan BELAC.



Mobiele Service

Naast de vaste kalibratielaboratoria in Zaventem en Capelle aan den IJssel beschikken wij ook over een laboratorium op wielen met de naam "Mobiele Service". Dit biedt vertrouwde service en kwaliteit, bij u voor de deur!

KWS®

KWS® is een uniek servicesysteem voor uw meetinstrumenten met periodiek onderhoud en kalibratie tegen vaste, lage kosten. Via een gratis webportal (mijnkws.be) heeft u altijd en overal beschikking over uw kalibratiecertificaten.

Verhuur van meetinstrumenten

- Uitgebreid assortiment
- Nauwkeurigheid aantoonbaar door actueel kalibratiecertificaat
- Deskundig advies
- Complete levering inclusief accessoires

EURO-INDEX Academy

- Trainingen, seminars en workshops
- Demonstratie- en instructievideo's
- Application notes



Servicebalie



Onderhoud, reparatie en kalibratie



Trainingen en seminars



Mobiele Service

Wijzigingen voorbehouden EURO-INDEX® VL 23001



BELGIË
Leuvensesteenweg 607
1930 Zaventem
T: 02 - 757 92 44
F: 02 - 757 92 64
sales@euro-index.be
www.euro-index.be

NERLAND
Rivium 2e straat 12
2909 LG Capelle a/d IJssel
T: +31 - (0)10 - 2 888 000
F: +31 - (0)10 - 2 888 010
verkoop@euro-index.nl
www.euro-index.nl

